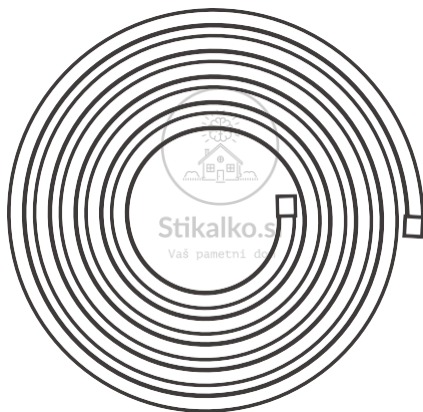


SONOFF



LBS L2/L2 Lite

Navodila za uporabo V1.1



Wi-Fi LED trak z glasbeno funkcijo

Funkcije LED traku

- SMD5050 LED; FPCB krmilna enota; 3 LED diode v enem segmentu.
- Barve: RGB (Rdeča/Modra/Zelena).



Upravljanje z aplikacijo



Glasovno upravljanje



Enkratni/odštevalni časovnik



Deljenje nadzora



Zatemnitev



Spremljava glasbe



16M Barv



Daljinski upravljalnik



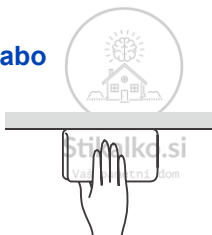
Bluetooth nadzor



Scene

Navodila za uporabo

1. Očistite površino



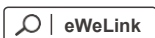
2. Odstranite zaščitni trak



3. Trak pritrdite na površino

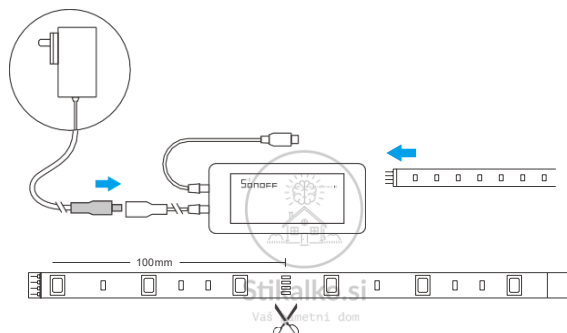


4. Prenesite aplikacijo eWeLink



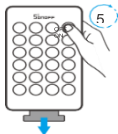
Android™ & iOS

5. Vklopite



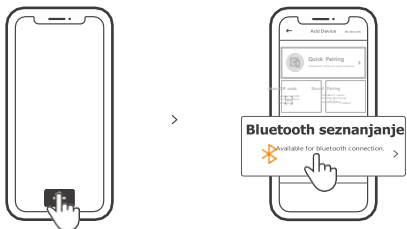
ⓘ Možnost rezanja LED traku vsakih 100mm.

6. Izvlecite izolacijsko varovalo baterije, nato pa pritisnite in držite tipko "on" za 5 sekund, vse dokler LED trak ne utripne, kar pomeni, da je naprava prešla v način Bluetooth združevanja.



ⓘ Naprava bo prekinila način Bluetooth združevanja v kolikor v 1 minuti ne bo združena z aplikacijo. V kolikor želite ponovno zagnati način Bluetooth združevanja, na daljinskem upravljalniku pritisnite in držite tipko "on" za približno 5 sekund, vse dokler LED trak ne začne utripati.

7. Dodajanje naprave



Pritisnite "+" in izberite Bluetooth seznanjanje. Sledite navodilom aplikacije.

Specifikacija

Model: L1-2M, L1-5M, L1 Lite-5M-EU, L1 Lite-5M-US

Svetlobni trak

Vhodna napetost	DC 12V	Št. LED	30 LED/m
Svetilnost Flux	≥300lumens/m	Življenjska doba	> 25000 ur
Kot svetilnosti	L1: 140° L1 Lite: 120°	Delovna temperatura	-15°C ~ 50°C
Dovoljena vlaga	≤95%	Zaščita	L1: IP65 L1 Lite: IP20
Material	FPCB		
Upad svetilnosti	Manj kot 3% po 1000 urah delovanja		

Polnilec

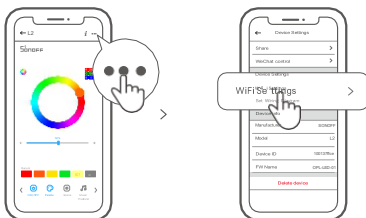
Vhod	100-240V AC 50/60Hz 0.6A Max	Izhod	DC 12V 2000mA
Zaščita	Prenapetostna, Tokovna, Temperaturna		

Wi-Fi krmilnik

Vhod	DC 5-12V	Moč	24W(36W Max)
Daljinski upravljalnik	IR daljinski upravljalnik; 24 tipk	Wi-Fi	IEEE 802.11 b 2.4GHz
Baterija daljinskega upravljalnika	3V(CR2025)	Bluetooth	5.0 BLE
Operacijski sistem	Android & iOS		

Nastavitve Wi-Fi upravljanja

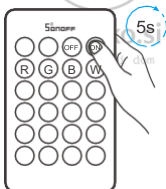
Za dodajanje ali spremembo omrežja v eWeLink aplikaciji izberite "Wi-Fi nastavitve" v meniju "Nastavitve naprave".



⚠ Če Wi-Fi ni na voljo, bo naprava samodejno preklopila v Bluetooth način (prepričajte se, da je Bluetooth omogočen na vašem mobilnem telefonu).

Ponovna vzpostavitev seznanjanja

Pritisnite in držite tipko "on" za 5 sekund, dokler svetlobni trak ne utripne, kar pomeni, da je naprava prešla v način Bluetooth seznanjanja in jo lahko ponovno združite.



Tovarniške nastavitve

Z izbrisom naprave iz aplikacije eWeLink, ste napravo povrnili na tovarniške nastavitve.

Varnostno opozorilo

1. Pred uporabo traku se prepričajte, da je napetost vašega napajanja primerna za uporabo traku glede na navedene specifikacije. Uporaba traku z napetostjo višjo od predpisane, lahko trak poškoduje in povzroči nevarnost za uporabnika in okolje..
2. Posamezne LED diode niso zamenljive, zato jih ne poskušajte odstraniti ali zamenjati.
3. Trak med delovanjem generira toploto, zato ga namestite na mesto, ki zagotavlja zračenje in odvajanje toplote.

FCC Warning

Changes or modifications not expressly approved by the party responsible for compliance could avoid the user's authority to operate the equipment.

This device complies with part 15 of the FCC Rules. Operation is subject to the following two conditions: (1) This device may not cause harmful interference, and (2) this device must accept any interference received, including interference that may cause undesired operation.

FCC Radiation Exposure Statement:

This equipment complies with FCC radiation exposure limits set forth for an uncontrolled environment. This equipment should be installed and operated with minimum distance 20cm between the radiator & your body. This transmitter must not be co-located or operating in conjunction with any other antenna or transmitter.

Note:

This equipment has been tested and found to comply with the limits for a Class B digital device, pursuant to part 15 of the FCC Rules. These limits are designed to provide reasonable protection against harmful interference in a residential installation. This equipment generates, uses and can radiate radio frequency energy and, if not installed and used in accordance with the instructions, may cause harmful interference to radiocommunications. However, there is no guarantee that interference will not occur in a particular installation. If this equipment does cause harmful interference to radio or television reception, which can be determined by turning the equipment off and on, the user is encouraged to try to correct the interference by one or more of the following measures:

- Reorient or relocate the receiving antenna.
- Increase the separation between the equipment and receiver.
- Connect the equipment into an outlet on a circuit different from that to which the receiver is connected.
- Consult the dealer or an experienced radio/TV technician for help.



Hereby, Shenzhen Sonoff Technologies Co., Ltd. declares that the radio equipment type L1-2M/L1-5M/L1 Lite-5M-US/L1 Lite-5M-EU is in compliance with Directive 2014/53/EU. The full text of the EU declaration of conformity is available at the following internet address:

<https://sonoff.tech/usermanuals>



Stikalko.si

Vaš pametní dom

SONOFF

Shenzhen Sonoff Technologies Co., Ltd.

1001, BLDG8, Lianhua Industrial Park, shenzhen, GD, China

ZIP code: 518000

Website: sonoff.tech

MADE IN CHINA



RoHS



Stikalko.si
Vaš pametní dom