

SONOFF

SNZB-01

Navodila za uporabo V 1.0



ZigBee pametno stikalo

Slovenščina ----- 2-6

Naprava deluje v kombinaciji s SONOFF ZigBee Bridge sprejemnikom.

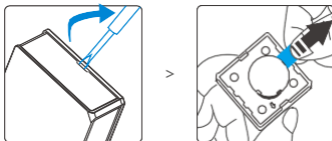
ⓘ Naprava deluje tudi z drugimi usmerniki, ki podpirajo ZigBee 3.0 brezžični protokol. Podrobne informacije so odvisne od končnega produkta

Navodila za uporabo

1. Prenesite aplikacijo

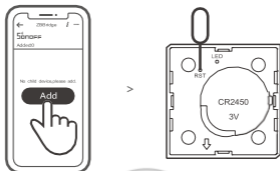


2. Izvlecite izolacijsko varovalno baterije



3. Dodajte podnaprave

- ⓘ Pred dodajanjem podnaprav, povežite ZB Bridge



Zaženite aplikacijo eWeLink, izberite Bridge, ki ga želite povezati, kliknite "Add" za dodajanje podnaprave. Pritisnite in držite tipko za ponastavitev za (RST) 5 sekund, vse dokler LED indikator ne utripne 3x, kar pomeni, da je naprava prešla v način združevanja. Počakajte dokler se združevanje ne zaključi.

- ⓘ Če je združevanje neuspešno, napravo prestavite bližje k Bridge napravi in poskusite ponovno.

Stikalko.si

Specifikacija

Vaš pametni dom

Model	SNZB-01
Model baterije	CR2450
Delovna napetost	3V
Brezžična povezava	ZigBee (IEEE 802.15.4)
Delovna temperatura	-10~40°C
Dovoljeno delovno okolje	10-90%RH (brez kondenza)
Material	PC
Dimenzije	43x43x16mm

Predstavitev produkta



Funkcije

SNZB-01 ZigBee je nisko-energijsko, brezžično stikalo, ki ga lahko postavite kamorkoli. V kombinaciji z Bridgom, ga lahko uporabite za vklop ostalih naprav, povezanih z aplikacijo eWeLink.



Nizka poraba



Obvestilo o nizkem
nivoju baterije



Pametne scene

Navodilo za delovanje

Tipko lahko pritisnete enkrat, dvakrat ali pa pritisnete in držite, da upravljate z različnimi funkcijami.

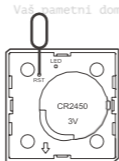
SONOFF ZigBee Bridge hkrati podpira povezovanje večih naprav.



Vklopite Bridge, odprite Bridge v eWeLink aplikaciji in pritisnite "Add". Nato napravo, ki jo želite združiti, nastavite na način združevanja in počakajte, dokler se združevanje ne zaključi.

Odstranjevanje podnaprav

Pritisnite in držite tipko za ponastavitev na napravi za 5 sekund, vse dokler LED indikator ne utripne 3x. Tako je naprava uspešno odstranjena iz Bridga.



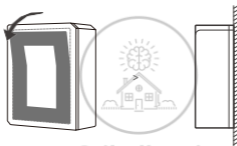
ⓘ Uporabnik lahko podnapravo odstrani neposredno s strani podnaprav v aplikaciji.

Vgradnja

1. Postavite na delovno površino.



2. Odlepite zaščito dvostranskega 3M lepilnega traku in pritrdite napravo na zeleno območje.



- ⓘ Naprave ne nameščajte na kovinsko podlago, ker lahko vpliva na doseg signala.
- ⓘ Teža naprave je manj kot 1 kg.
Priporočena je vgradnja na višini manjši od 2 metrov.

FCC Warning

Changes or modifications not expressly approved by the party responsible for compliance could void the user's authority to operate the equipment.

This device complies with part 15 of the FCC Rules. Operation is subject to the following two conditions: (1) This device may not cause harmful interference, and (2) this device must accept any interference received, including interference that may cause undesired operation.

FCC Radiation Exposure Statement:

This equipment complies with FCC radiation exposure limits set forth for an uncontrolled environment. This equipment should be installed and operated with minimum distance 20cm between the radiator & your body. This transmitter must not be co-located or operating in conjunction with any other antenna or transmitter.

Note:

This equipment has been tested and found to comply with the limits for a Class B digital device, pursuant to part 15 of the FCC Rules. These limits are designed to provide reasonable protection against harmful interference in a residential installation. This equipment generates, uses and can radiate radio frequency energy and, if not installed and used in accordance with the instructions, may cause harmful interference to radio communications. However, there is no guarantee that interference will not occur in a particular installation. If this equipment does cause harmful interference to radio or television reception, which can be determined by turning the equipment off and on, the user is encouraged to try to correct the interference by one or more of the following measures:

- Reorient or relocate the receiving antenna.
- Increase the separation between the equipment and receiver.
- Connect the equipment into an outlet on a circuit different from that to which the receiver is connected.
- Consult the dealer or an experienced radio/TV technician for help.



Hereby, Shenzhen Sonoff Technologies Co., Ltd. declares that the radio equipment type SNZB-01 is in compliance with Directive 2014/53/EU. The full text of the EU declaration of conformity is available at the following internet address:

<https://www.sonoff.tech/usermanuals>

TX Frequency:

ZigBee: 2405-2480MHz

MAX PER:

2.23 (2405MHz) , 2.24 (2480MHz)



Stikalko.si

Vaš pametni dom


SONOFF

Shenzhen Sonoff Technologies Co., Ltd.

1001, BLDG8, Lianhua Industrial Park, shenzhen, GD, China

ZIP code: 518000

Website: sonoff.tech

MADE IN CHINA



Stikalko.si
vaš pametni dom